

VIEWS OF GULLION

VIEWS OF GULLION

Conor Ó Daighre

*An exhibition of oil paintings exploring
Ireland's mystery mountain from the
surrounding townlands of South Armagh
and North Louth*



Sean Hollywood Arts Centre

Newry

February 2019

VIEWS OF GULLION

Views of Gullion is a series of paintings depicting Slieve Gullion from the surrounding townlands of South Armagh and North Louth. At the heart of the unique geological formation and designated Area of Outstanding Natural Beauty, the eroded remains of a Paleocene volcano rises above the ancient rolling hills, steeped in ancient mythology including the sagas of Fionn Mac Cumhaill and Cú Chulainn.

The ghosts of Gaelic Ireland abound in these forgotten corners of the The Ring of Gullion, an area that has seen great recent changes in the form of long-sought demilitarisation, seemingly unbridled housing development and deforestation rumoured to be driven by the 'cash-for-ash' scandal. Despite this and the impending crisis of *Breatimeacht* and late-stage capitalism, the mountain's presence remains a timeless and steadfast reminder of our roots and heritage and yet, depending on the weather, time of day and vantage point, Gullion's outline and colours change dramatically, making a fascinating subject for landscape paintings.

Conor Ó Daighre is an artist from the foothills of Slieve Gullion. He has travelled extensively in Europe and Asia but has always been drawn home and his latest 2 year stint back has enabled him to return to developing his interest in landscapes, a skill he feels is an ongoing and exciting journey into improving and exploring different styles of oil painting. The pieces of *Views of Gullion* express this experimentation and offer only an initial glimpse into what he hopes will be a project lasting a lifetime of returning to the mountain to endeavour to capture its glory from the unlimited perspectives it offers.

VIEWS OF GULLION



**Radharc ón Abhainn Chaisleánn Dhún
Dealgan le Fáinne Cnoc Shliabh gCuillinn i
bhfad uainn**

*View from the Castletown River, Dundalk with
The Ring of Gullion in distance*

Oil on Canvas, 2018

30 x 80 cm

£355

Radharc ar Sliabh gCuillinn ó Magh Rí

View of Slieve Gullion from Moyry Castle

Oil on Canvas, 2018

30 x 80 cm

£420



**Teach tréigthe i hAcadh an Dá Mhaoil le
Sliabh gCuillinn agus Cuaille i bhfad uainn**

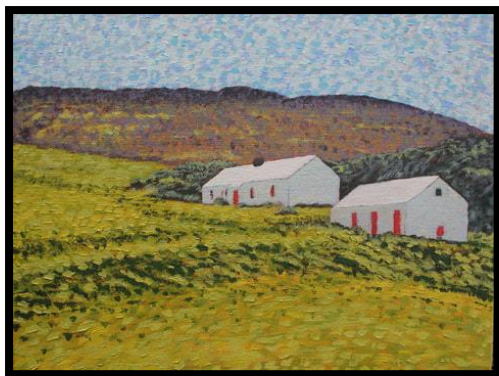
*An abandoned house in Aghadavoyle with
Slieve Gullion in the distance*

Oil on canvas, 2019

35 x 70 cm

£420

VIEWS OF GULLION



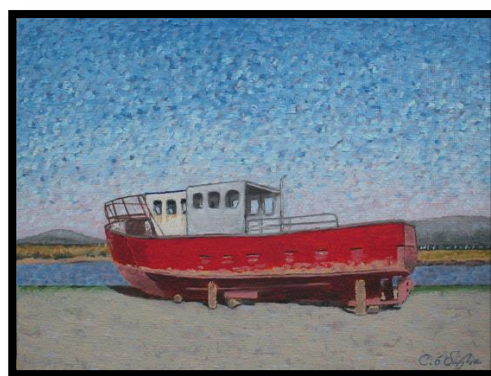
Radharc ar Sliabh gCuillinn ó Baile Ard

View of Slieve Gullion from Ballard

Oil on Canvas, 2018

18 x 24 cm

£75



Bád ar Cé San Seoirse, Dún Dealgan le Sliabh gCuillinn agus Cuaille i bhfad uainn

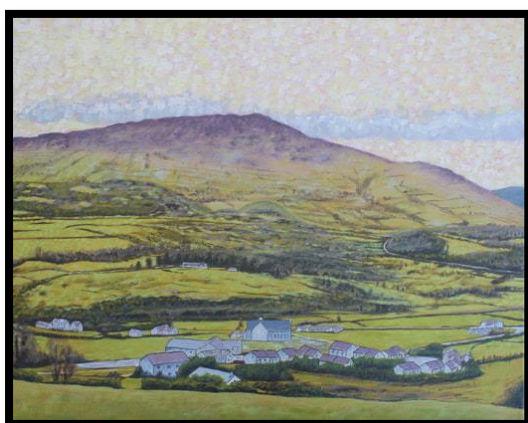
Boat at George's Quay, Dundalk with Slieve

Gullion and Cooley in the distance

Oil on Canvas, 2018

18 x 24 cm

£75



Radharc ar Sliabh gCuillinn ó Lios Liath

View of Slieve Gullion from Lislea

Oil on canvas, 2018

50 x 60 cm

£240



Radharc ar Sliabh gCuillinn ón Caiseal

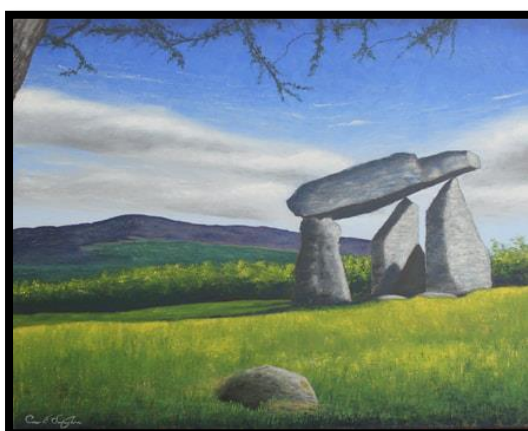
View of Slieve Gullion from Balinastack Rd,

Cashel

Oil on canvas, 2017

40 x 50 cm

£240



Radharc ar Sliabh gCuillinn ó dolmain

Baile Caol

View of Slieve Gullion from Ballykeel dolmen

Oil on Canvas, 2017

40 x 50 cm

£240



Radharc ó bharr an tsliabh i dtreo loch

Ceallach Beara

View from Slieve Gullion towards the

Ceallach Beara's Lake

Oil on Canvas, 2017

40 x 50 cm

£240

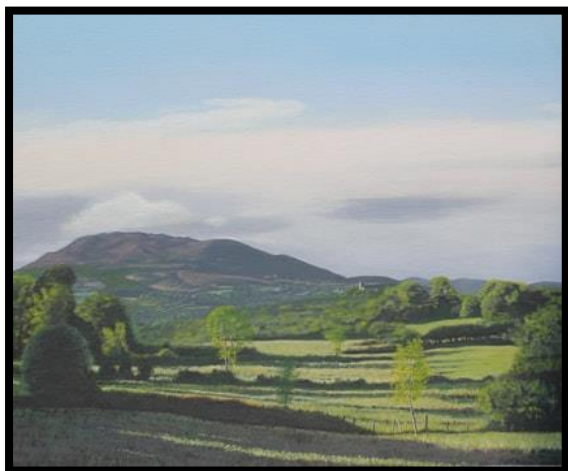
VIEWS OF GULLION



Radharc ar Sliabh gCuillinn ó Suí Fionn
View of Slieve Gullion from Seafin
 Oil on Canvas, 2018
 30 x 40 cm
£180



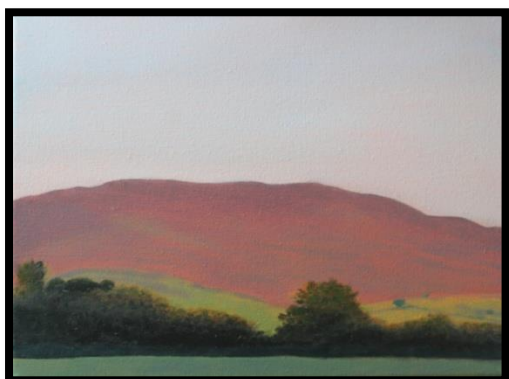
Radharc ar Sliabh gCuillinn ón Sheanbóthar, Droim an Tí
View of Slieve Gullion from Old Road, Dromintee
 Oil on Canvas, 2017
 30 x 40 cm
£180



Radharc ar Sliabh gCuillinn agus séipéal Droim an Tí ó Taoibh Crom
View of Slieve Gullion and Dromintee Chapel from Tievecrom.
 Oil on Canvas, 2018
 30 x 40 cm
£180

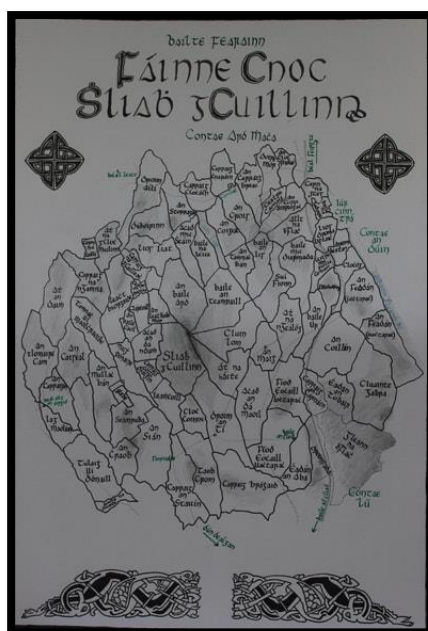


Radharc ar Sliabh gCuillinn ó Taoibh Crom
View of Slieve Gullion from Tievecrom
 Oil on Canvas, 2017
 50 x 60 cm
£365



Radharc ar Sliabh gCuillinn ó hAth an Daimh
View of Slieve Gullion from Aughanduff
 Oil on Canvas, 2017
 22.5 x 30 cm
£65

VIEWS OF GULLION



Bailte Fearainn, Fáinne Cnoc Shiabh gCuillinn

Townlands of the Ring of Gullion

Black ink and fountain pen on paper, 2018
42 x 28.5 cm

£100

OTHER PAINTINGS

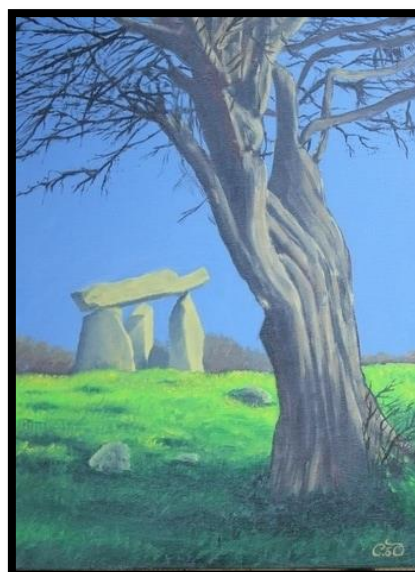


Teach tréigthe i gCloch Choinne

Abandoned house in Cloughinnea

Oil on canvas, 2017
25 x 30 cm

£65



Dolmain Baile Caol agus Draighean

Ballykeel dolmen and blackthorn tree

Oil on canvas, 2009
40 x 30 cm

£75



El Tres de Mayo (after Goya and Ballagh)

Acrylic on canvas, 2015
25 x 30 cm

£65