

Geopháirc Dhomhanda UNESCO Mhúrn, Shliabh gCuillinn, Bhaile Loch Cuan

Mourne Gullion Strangford UNESCO Global Geopark

Eochair Key

- 1-23 Láithreáin Gheopháirce Geopark Sites
- 24-49 Áiteanna inspéise Places of Interest
- Sáadchomharthaí faoi Chúram an Stáit State Care Monuments
- Ionad Eolais do Chuariteoirí Visitor Information Centre
- MPA Limistéar Mara faoi chosaint Marine Protected Area
- Síl Chanáil an Iúir Newry Canal Way
- Síl Leath Cathail Lecale Way
- Síl Fháinne Cnoc Shliabh gCuillinn Ring of Gullion Way
- Sílóid Oilthrígh Phádraig St Patricks Pilgrim Walk
- Síl Mhúrn Mourne Way
- Teorainn na Geopháirce Geopark Boundary

Reading the Geology Map

Geological maps show different rock types and their relationships with the landscape. Each colour represents a specific rock formation, while lines indicate faults or geological boundaries. Not all rocks on the map are exposed at the surface—some are hidden beneath soil or glacial deposits.

By exploring the Geopark, you'll see how geology has shaped not only the landscape but also the people, traditions, and heritage of the region. From ancient stone walls to folklore about volcanic mountains, every rock has a story to tell.

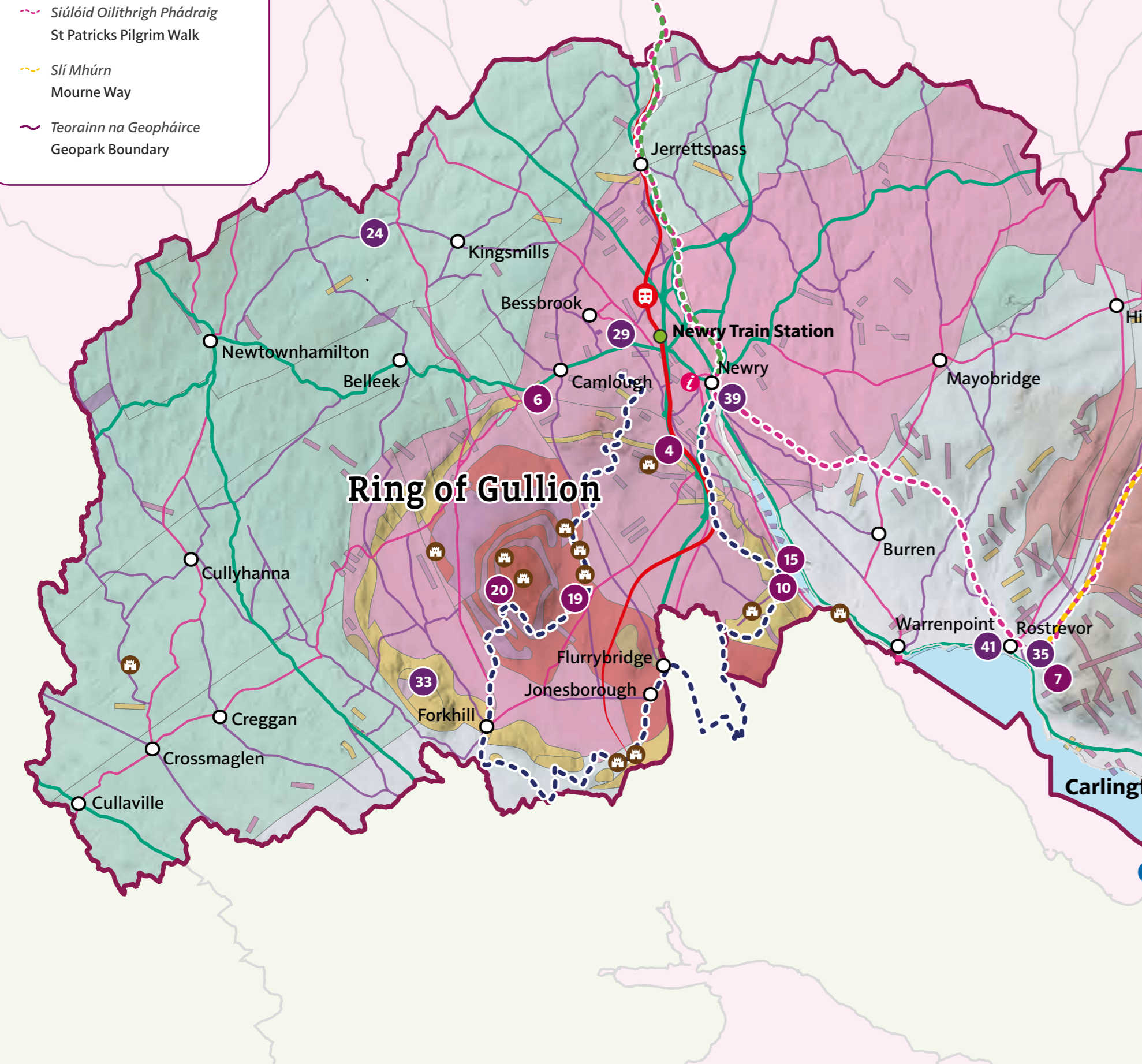
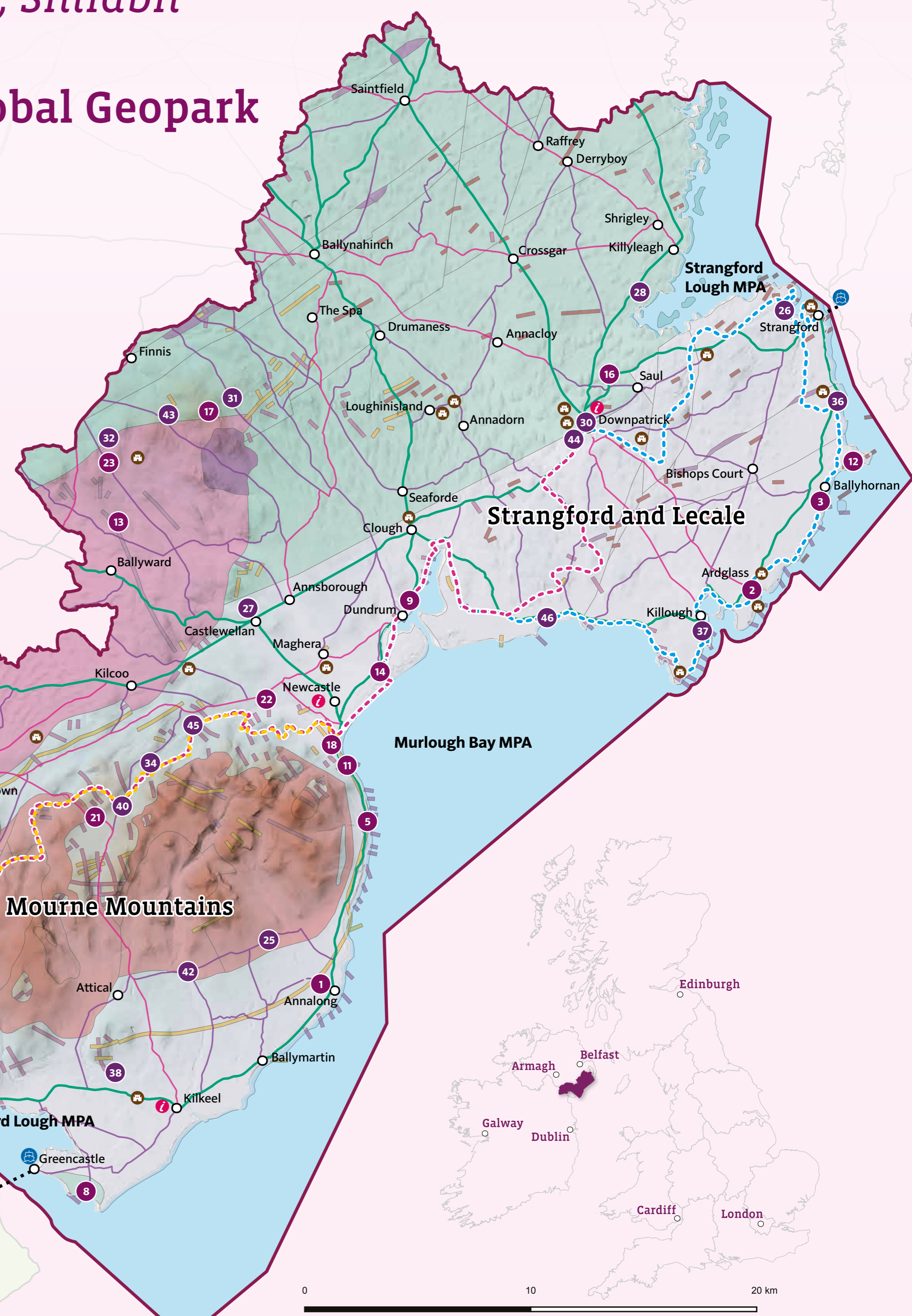
Geolaíocht Geology

Cineálacha Carraigeacha Rock Types

- Pailéigín, Eibhear Palaeogene. Granite
- Pailéigín, Dolairt & Gabró Palaeogene. Dolerite & Gabbro
- Pailéigín, Laibhe Bholcáin Palaeogene. Volcanic Lavas
- Carbónmhar, Aolchloch Carboniferous. Limestone
- Siallúrachy/Deavónach, Eibheardháirt Silurian/Devonian. Granodiorite
- Meitidhríodar Siallúracha, Teiréan an Longfort-an Dúin Silurian Metasediments, Longford-Down Terrane

Is óige Younger

Is sine Older



Welcome to Mourne Gullion Strangford Geopark

Explore a landscape shaped by fire and ice, where ancient geology meets rich heritage and vibrant communities. This poster introduces the fascinating geology of Mourne Gullion Strangford Geopark, including a bedrock geology map, an overview of the region's geological history, and key sites where geology has influenced the landscape, culture, and heritage.

Chun tuilleadh sonraí a fháil faoi Láithreáin Gheopháirce. Scanáil anseo

For more details on Geopark Sites. Scan here



Láithreáin Gheopháirce Geopark Sites

- | | | |
|---------------------------------------------------------------------------------------------------------------------------------------------------------------------------------------------------------------------------------------------------------------|-------------------------------------------------------------------------------------------------------------------------------------------------------------------------------------------------------------------------------------------------------------------------------------|------------------------------------------------------------------------------------------------------------------------------------------------------------------------------------------------------------------------------------------------------------------------------------|
| <ul style="list-style-type: none"> 1. Annalong 2. Ardglass 3. Ballyhornan 4. Bernish Viewing Point 5. Bloody Bridge 6. Camloch 7. Cloughmore Glacial Erratic 8. Cranfield Beach | <ul style="list-style-type: none"> 9. Dundrum Inner Bay 10. Flagstaff 11. Granite Trail 12. Killard Point 13. Lighthouse Road 14. Murlough National Nature Reserve 15. Newry Canal 16. Quoile Estuary | <ul style="list-style-type: none"> 17. Slieve Croob 18. Slieve Donard (Donard Car Park) 19. Slieve Gullion 20. Slieve Gullion Ring Dyke 21. Spelga Dam 22. Tollymore Forest Park / Shimna River 23. Windy Gap |
|---------------------------------------------------------------------------------------------------------------------------------------------------------------------------------------------------------------------------------------------------------------|-------------------------------------------------------------------------------------------------------------------------------------------------------------------------------------------------------------------------------------------------------------------------------------|------------------------------------------------------------------------------------------------------------------------------------------------------------------------------------------------------------------------------------------------------------------------------------|

Áiteanna inspéise Places of Interest

- | | | |
|---------------------------------------------------------------------------------------------------------------------------------------------------------------------------------------------------------------------------------------------------------------------------------------------------------------|------------------------------------------------------------------------------------------------------------------------------------------------------------------------------------------------------------------------------------------------------------------------------|----------------------------------------------------------------------------------------------------------------------------------------------------------------------------------------------------------------------------------------------------------|
| <ul style="list-style-type: none"> 24. Ballymoyer Woodland 25. Carrick Little Carpark 26. Castle Ward 27. Castlewelan Forest Park 28. Delamont Country Park 29. Derrymore Demesne 30. Down County Museum 31. Drumkeeragh Forest | <ul style="list-style-type: none"> 32. Finnis Souterrain 33. Glendasha Forest 34. Happy Valley Car Park 35. Kibrony Park 36. Kilclief 37. Killough 38. Mourne Wood 39. Newry and Mourne Museum | <ul style="list-style-type: none"> 40. Ott Car Park 41. Ross Monument 42. Silent Valley Mountain Park 43. Slieve Croob 44. St Patricks Grave 45. Trassey Car Park 46. Tyrella Beach |
|---------------------------------------------------------------------------------------------------------------------------------------------------------------------------------------------------------------------------------------------------------------------------------------------------------------|------------------------------------------------------------------------------------------------------------------------------------------------------------------------------------------------------------------------------------------------------------------------------|----------------------------------------------------------------------------------------------------------------------------------------------------------------------------------------------------------------------------------------------------------|

A Landscape Forged by Fire and Ice

Over millions of years, volcanic eruptions, shifting continents, and glacial advances sculpted the unique terrain of the Mourne Gullion Strangford UNESCO Global Geopark. This dramatic landscape tells a story written in stone; where ancient lava flows, cooled magma chambers, and the grinding force of glaciers combined to shape the region we see today.

The Geopark's stunning mountains, rolling drumlins, and sweeping glacial valleys reflect this epic geological journey. From the striking Palaeogene volcanic ring dyke of Slieve Gullion and the granite peaks of the Mournes, to the fossil-rich Carboniferous rocks at Cranfield and to the drowned drumlins of Strangford Lough, every landform reveals a chapter of Earth's deep-time history. Together, they invite visitors to explore a landscape forged by elemental forces and shaped across aeons; where geology, heritage, and nature are powerfully and beautifully entwined.

The Bedrock of the Geopark - A Tale of Two Oceans

The rocks beneath your feet span hundreds of millions of years and reveal a complex geological history:

Ordovician & Silurian Periods (485-420 million years ago)

The oldest rocks in the Geopark are sandstone and mudstones that formed on the bottom of the ancient Iapetus Ocean. These layers have since been compressed and deformed and now form the landscape's foundations.

Devonian Period (420 to 360 million years ago)

As the Iapetus Ocean closed, magma intruded into the crust, forming the granodiorite of the Newry Igneous Complex, stretching from Slieve Croob to Forkhill.



Carboniferous Period (360 to 300 million years ago)

In the Cranfield area, limestone and mudstone formed in warm, tropical seas teeming with marine life, leaving behind fossils of corals, crinoids, and brachiopods.



Palaeogene Period (65-25 million years ago)

Intense volcanic activity created the dramatic geology of Slieve Gullion and the Mourne Mountains.



Quaternary Period (2.6 million years ago to present)

Up until 15,000 years ago, ice sheets repeatedly covered this region, sculpting the landscape into what we see today. The last major glaciation saw ice advancing from Scotland and across Ireland, covering the land in thick sheets of ice, veering the land in thick sheets of ice.

Mourne Mountains Complex

Five distinct granite intrusions shaped the peaks of the Mournes, with visible boundaries where they meet older Silurian rocks.



Slieve Gullion Ring Dyke Complex

The Slieve Gullion Complex is the remains of a complex and violent volcano consisting of two main elements. The first is a circular ring dyke made up of granophyre and felsite rocks, and the second is the central Slieve Gullion made up of layers of granitic and basaltic rocks.



Shaped by Ice: The Glacial Story

Strangford Lough

As ice moved, it carved valleys, transported massive boulders (erratics), and left behind ridges of debris (drumlins and moraines).

When the ice melted, it revealed Strangford Lough's drowned coastline and the rugged terrain of the Mournes and Gullion.



This material is Crown Copyright and is reproduced with the permission of Land & Property Services under delegated authority from the Controller of His Majesty's Stationery Office. © Crown copyright and database rights 2025 CS&LA777

MourneGullionStrangfordGeopark.com

Explore the Geology of Mourne Gullion Strangford Geopark!

Want to dive deeper into our fascinating landscape? Scan here to watch our Virtual Educational Tours.

